

## Villa 1412, Grand Isle Resort and Residences Great Exuma, Bahamas

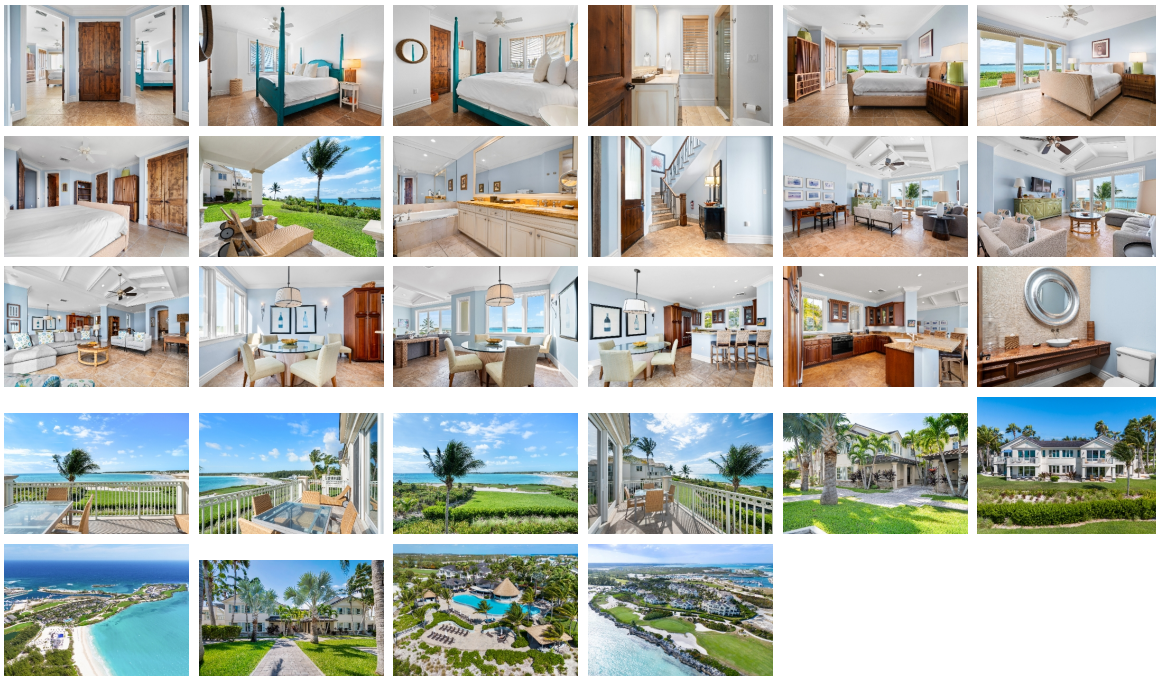
Property Code: 57318

### Property Location:

Grand Isle Resort and Residences, Emerald Bay,  
Gre  
Exuma & Exuma Cays  
Great Exuma, Bahamas

### Amenities:

Bathrooms: 2.0  
Bedrooms: 2  
Surface: 2315 Sq. Ft.  
Year Built: 2007



### Description:

Resort living steps from the Pool and Beach! Imagine walking onto your patio overlooking Emerald Bay and strolling across the beautifully landscaped grounds to the infinity pool at Palapa or the powdery sands of the Emerald Bay Beach. Closest to resort amenities, Villa 1412 is a 2 bedroom, 2.5 bath representing the high level of care and due attention performed at Grand Isle, the embodiment of turnkey Resort living. All Grand Isle Villas offer the comforts of home with full kitchens, with Subzero refrigeration, electric range and oven, and a washer/dryer. All mattresses were recently replaced, along with the paint refreshed throughout the villa. Grand Isle amenities include three food venues and bars, a fitness center, a Spa, two pools and lounge chairs, and water toys at the beach. Each Villa includes a golf cart for use on the Resort Grounds. Grand Isle is located 15 minutes from the international airport with daily flights from Miami, Atlanta, Charlotte, and Nassau.

Single Family Home,  
Sale

**1 150 000 USD**

[www.eraeuropeic.com](http://www.eraeuropeic.com)